



INTERNATIONAL  PAPER

## Foodservice Business

Product Catalog

# ABOUT INTERNATIONAL PAPER FOODSERVICE BUSINESS

International Paper Foodservice Business is committed to developing innovative single-use packaging solutions that meet the needs of the growing foodservice industry. We operate a multi-plant manufacturing system that produces hot and cold cups, food containers and buckets, lids and accessories, as well as many environmentally-friendly options.

We make all of our paper products from trees that come from responsibly managed forests, and our US manufacturing facilities are certified to Sustainable Forestry Initiative® (SFI®), Programme for the Endorsement of Forest Certification® (PEFC®) and Forest Stewardship Council® (FSC®) Chain-of-Custody standards. International Paper Foodservice Business is committed to improving our environmental footprint, and we will continue to work towards reducing our impact in our facilities, with our end-of-life solutions and through our sustainable products.

With a dedicated staff of designers, our Graphics organization uses a collaborative approach to solve your graphic needs. Packaging solutions can also be designed to meet your business challenges by partnering with our innovative product development and technology teams. International Paper Foodservice has a proven record of delivering quality products and services over the long-term to regional and multi-national accounts. We take pride in providing superior service — delivering your orders on time, in full and without errors.

As a global company, International Paper Company has been recognized for the last nine years as one of Fortune's Most Admired Companies in the Forest Products Industry. Our Foodservice team has also been recognized by many of our customers for our service and product quality.

International Paper Foodservice Business is committed to improving our environmental footprint in our operations, through our sustainable products and with our end-of-life solutions.

For more information please visit us at [www.ipfoodservice.com](http://www.ipfoodservice.com).



**DESIGN & PREPRESS:** Clemson, SC • Kenton, OH • Shelbyville, IL

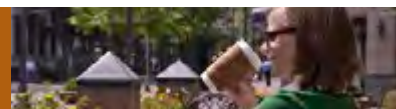
**SALES & CUSTOMER SERVICE:** Elk Grove Village, IL • Memphis, TN • Winsford, UK • Shanghai, China

**MANUFACTURING & TECHNOLOGY:** Kenton, OH • Menomonee Falls, WI • Shelbyville, IL • Visalia, CA • Winsford, UK • Shanghai, China • Tianjin, China (opening 2012) • Envases Puros (Joint Venture)

# Catalog Contents

## Hot Beverage Containers

Hot Cups and Lids	2-4
ecotainer® Hot Cups and Lids	5
Post Consumer Recycled Fiber Hot Cups	6
Individually Wrapped Cups	6
Hold&Go® Insulated Hot Cups and Lids	7
Vending Cups and Lids	8
Hot Cup Accessories	9



## Cold Beverage Containers

Cold Cups and Lids	10-13
ecotainer® Cold Cups and Lids	14
Clear Plastic Cups and Lids	15
Car Cups and Lids	16
Vending Cups and Lids	17
Cold Cup Accessories	17



## Food Packaging

Food Containers	18-20
Combo Packs	20
Hot Food Lids	21
Cold Food Lids	22
ecotainer® Food Containers	23
Snack Containers	24
Food Buckets	25
Bucket Lids	26
Popcorn Buckets and Bags	27
Plates	28



## Additional Information

Product Nomenclature	29
----------------------	----





# Hot Cups

In today's growing trend of beverages on-the-go, we've got you covered. Our hot cups come in an array of stock designs and custom prints are available to coordinate with your décor and enhance your merchandising. Whether you are looking for paper, recycled materials, compostable or insulated, we have a solution to meet your needs. International Paper's hot cups have one lid that fits five of the most common sizes; this helps reduce your inventory and improve efficiency. All of our paper hot cups meet the Sustainable Forestry Initiative® Chain-of-Custody standards, ensuring responsible forestry practices are followed. We have an extensive offering for hot beverage products and are confident we have solutions that meet your needs.



## Standard Hot Cups

Our traditional paper hot cups are coated using a single poly (polyethylene plastic) lining, used as a moisture barrier. A variety of lid types and colors are available to fill all your needs for beverages on-the-go. Our hot cups are offered in various warm designs to complement any décor or they can be printed with your logo using our high-end graphics capabilities.

## STOCK DESIGNS BY SIZE



	Carte Blanc®	Champagne	Tuscany™	SoHo®
4oz	X		X	X
6oz				X
8oz	X	X	X	X
10oz	X	X		X
10oz (modified)	X	X	X	X
12oz	X	X	X	X
16oz	X	X	X	X
20oz	X	X	X	X
24oz	X		X	X

## STANDARD HOT CUPS



	4oz	6oz	8oz	10oz
Stock #	SMR-4	SMR-6	SMR-8	SMR-10
Case/Sleeve Qty	1000/50	1000/50	1000/50	1000/50
Case Weight (lbs)	9.2	18.0	20.8	25.3
Case Cube (cu ft)	1.17	2.46	2.73	2.92
Case Dimensions	12.88x10.38x15.13	15.88x12.88x20.75	16.38x13.38x21.50	16.88x13.75x21.75
Ti/Hi	12x6	9x4	9x4	9x4
Lid	LHRM-4	LHRL-6	LHRL-8, LHRDS-8, LHRDSB-8	LHRL-10, LHRDS-10, LHRDSB-10



## STANDARD HOT CUPS



	10oz (squat)	12oz	16oz	20oz	24oz
Stock #	SMM-10	SMR-12	SMR-16	SMR-20	SMT-24
Case/Sleeve Qty	1000/50	1000/50	1000/50	800/40	500/25
Case Weight (lbs)	25.3	27.2	34.7	30.0	23.0
Case Cube (cu ft)	3.70	3.15	3.99	3.33	3.00
Case Dimensions	18.13x14.63x24.13	18.38x14.88x19.88	18.13x14.63x26.00	17.88x14.63x22.00	18.00x14.38x20.00
Ti/Hi	6x4	6x5	6x4	6x4	6x5
Lid	LHRL-16, LHRDS-16, LHRN-16, LHRDSB-16, LHRLB-16, LHRNB-16, LHRDE-16				

— common lid for these sizes —

# Hot Cups



## STANDARD LIDS POLYSTYRENE



	Dome/White	Dome/White	Dome/White	Lock-Back Dome/White
<b>Stock #</b>	LHRDS-8	LHRDS-10	LHRDS-16	LHRN-16
<b>Case/Sleeve Qty</b>	1000/100	1200/100	1200/100	1200/100
<b>Case Weight (lbs)</b>	7.7	9.7	11.0	11.2
<b>Case Cube (cu ft)</b>	1.35	1.66	1.90	1.90
<b>Case Dimensions</b>	18.38x16.88x7.50	18.63x14.00x11.00	18.63x15.00x11.75	18.63x15.00x11.75
<b>Ti/Hi</b>	6x13	6x8	6x8	6x8

## STANDARD LIDS POLYSTYRENE



	Flat/White	Lock-Back/White	Lock-Back/White	Lock-Back/White	Lock-Back/White
<b>Stock #</b>	LHRM-4	LHRL-6	LHRL-8	LHRL-10	LHRL-16
<b>Case/Sleeve Qty</b>	1000/100	1000/100	1000/100	1000/100	1000/100
<b>Case Weight (lbs)</b>	3.6	5.5	5.8	7.0	7.0
<b>Case Cube (cu ft)</b>	0.70	1.25	1.48	1.81	1.81
<b>Case Dimensions</b>	13.50x5.63x16.00	17.38x16.63x7.50	18.50x17.50x7.88	18.88x18.63x8.88	18.88x18.63x8.88
<b>Ti/Hi</b>	4x24	6x12	6x13	6x11	6x11



## STANDARD LIDS POLYSTYRENE



	Dome/Black	Dome/Black	Dome/Black	Lock-Back Dome/Black	Lock-Back/Black
<b>Stock #</b>	LHRDSB-8	LHRDSB-10	LHRDSB-16	LHRNB-16	LHRLB-16
<b>Case/Sleeve Qty</b>	1000/100	1200/100	1200/100	1200/100	1000/100
<b>Case Weight (lbs)</b>	7.7	9.7	11.0	11.2	7.0
<b>Case Cube (cu ft)</b>	1.35	1.66	1.90	1.90	1.81
<b>Case Dimensions</b>	18.38x16.88x7.50	18.63x14.00x11.00	18.63x15.00x11.75	18.63x15.00x11.75	18.88x18.63x8.88
<b>Ti/Hi</b>	6x12	6x8	6x8	6x8	6x11



# Hot Cups



**ecotainer®**

**Making a difference – one cup at a time®**

An environmentally sensitive product line, ecotainer® uses a plant-based, Ingeo™ (PLA) coating that is fully compostable in commercial composting facilities. By using compostable hot cups and lids, we are decreasing our dependencies on petrochemicals and reducing the amount of waste being sent to landfills.

- ☛ Made with fully renewable materials
- ☛ Meets ASTM standard for compostability
- ☛ Certified by the Biodegradable Products Institute (BPI)
- ☛ Compostable in most commercial composting facilities\*



**ecotainer®**  
**STOCK**  
**DESIGNS**  
**BY SIZE**



	ecotainer® Carte Blanc®	ecotainer®
4oz	X	X
8oz	X	X
10oz	X	X
12oz	X	X
16oz	X	X
20oz	X	X

**ecotainer®**  
**LIDS**  
**PLA**



	Dome/Navajo White
Stock #	LHRDE-16
Case/Sleeve Qty	1200/100
Case Weight (lbs)	11.1
Case Cube (cu ft)	1.90
Case Dimensions	18.63x15.00x11.75
Ti/Hi	6x8



**ecotainer®**  
**HOT CUPS**



	4oz	8oz	10oz	12oz	16oz	20oz
Stock #	SMRE-4	SMRE-8	SMME-10	SMRE-12	SMRE-16	SMRE-20
Case/Sleeve Qty	1000/50	1000/50	1000/50	1000/50	1000/50	800/40
Case Weight (lbs)	9.4	21.2	25.8	27.6	35.4	30.6
Case Cube (cu ft)	1.17	2.73	3.70	3.15	3.99	3.43
Case Dimensions	12.88x10.38x15.13	16.38x13.38x21.50	18.13x14.63x24.13	18.38x14.88x19.88	18.13x14.63x26.00	18.25x14.75x 22.00
Ti/Hi	12x6	9x4	6x4	6x5	6x4	6x4
Lid	LHRM-4	LHRL-8, LHRDS-8, LHRDSB-8	LHRDE-16, LHRL-16, LHRDS-16, LHRN-16, LHRDSB-16, LHRLB-16, LHRNB-16			

common lid for these sizes

# Hot Cups



**10% PCF** **Post Consumer Recycled Fiber (PCF)** is a single-use paper cup made with 10% post-consumer recycled fiber. The PCF hot cup provides another alternative to renew your commitment to the environment.

## 10% PCF HOT CUPS



### 10% PCF STOCK DESIGN BY SIZE



	Renew World™
12oz	X
16oz	X
20oz	X

	12oz	16oz	20oz
Stock #	SMRP-12	SMRP-16	SMRP-20
Case/Sleeve Qty	1000/50	1000/50	800/40
Case Weight (lbs)	26.8	34.7	28.7
Case Cube (cu ft)	3.00	3.92	3.44
Case Dimensions	17.88x14.50x20.00	18.13x14.50x25.75	18.00x14.50x22.75
Ti/Hi	6x5	6x4	6x4
Lid	LHRDE-16, LHRL-16, LHRDS-16, LHRN-16, LHRDSB-16, LHRLB-16, LHRNB-16		

common lid for these sizes

### Individually Wrapped Hot Cups

The individually wrapped cup is designed to eliminate concerns around cleanliness for in-room beverage service. Consumers can feel confident opening the seal, knowing that they will be the first to use that cup. The two available sizes fit under standard in-room coffee machines and are stackable to save counter space. This product is offered in both standard and ecotainer® hot cups.

## INDIVIDUALLY WRAPPED CUPS STOCK DESIGNS BY SIZE



	Carte Blanc®	ecotainer®
8oz		X
10oz	X	X

## INDIVIDUALLY WRAPPED HOT CUPS



	8oz	10oz	10oz
Stock #	SWRE-8	SWME-10	SWMM-10
Case/Sleeve Qty	1000/50	1000/50	1000/50
Case Weight (lbs)	20.7	25.3	26.3
Case Cube (cu ft)	2.96	4.05	4.05
Case Dimensions	16.38x13.38x23.38	18.25x14.75x26	18.25x14.75x26
Ti/Hi	9x4	6x4	6x4
Lids	LHRL-8, LHRDS-8, LHRDSB-8	LHRDE-16, LHRL-16, LHRDS-16, LHRN-16, LHRDSB-16, LHRLB-16, LHRNB-16	

common lid for these sizes





# Hot Cups



## The Hot Cup with a Cool Feel®

Hold&Go® insulated paper hot cup uses a patent-pending Thermashield™ technology that delivers excellent insulating performance to eliminate the need for double cupping or a sleeve. The Hold&Go cup has unique lids that complete this premium package.

## HOLD&GO® HOT CUPS



## HOLD&GO® STOCK DESIGNS BY SIZE

	Carte Blanc®	Old World™
12oz	X	X
16oz	X	X
20oz	X	X
24oz	X	X

	12oz	16oz	20oz	24oz
Stock #	SDR-12	SDR-16	SDR-20	SDR-24
Case/Sleeve Qty	600/30	600/30	600/30	600/30
Case Weight (lbs)	27.0	34.0	35.6	37.5
Case Cube (cu ft)	3.25	4.03	4.16	4.77
Case Dimensions	18.88x15.19x19.56	18.88x15.19x24.31	18.88x15.19x25.06	19.94x16.06x25.75
Ti/Hi	6x5	6x4	6x4	6x4
Lid	LHDD-16, LHDDB-16, LHDN-16, LHDNB-16			LHDD-24, LHDDB-24, LHDN-24, LHDNB-24

common lid for these sizes

## HOLD&GO® LIDS POLYSTYRENE



	Dome/White	Dome/Black	Lock-Back Dome/White	Lock-Back Dome/Black
Stock #	LHDD-16	LHDDB-16	LHDN-16	LHDNB-16
Case/Sleeve Qty	1200/100	1200/100	1200/100	1200/100
Case Weight (lbs)	11.3	11.3	11.3	11.3
Case Cube (cu ft)	1.82	1.82	1.82	1.82
Case Dimensions	16.13x16.13x12.13	16.13x16.13x12.13	16.13x16.13x12.13	16.13x16.13x12.13
Ti/Hi	6x8	6x8	6x8	6x8

## HOLD&GO® LIDS POLYSTYRENE



	Dome/White	Dome/Black	Lock-Back Dome/White	Lock-Back Dome/Black
Stock #	LHDD-24	LHDDB-24	LHDN-24	LHDNB-24
Case/Sleeve Qty	1200/100	1200/100	1200/100	1200/100
Case Weight (lbs)	11.8	11.8	11.8	11.8
Case Cube (cu ft)	1.92	1.92	1.92	1.92
Case Dimensions	24.31x15.38x8.88	24.31x15.38x8.88	24.31x15.38x8.88	24.31x15.38x8.88
Ti/Hi	6x8	6x8	6x8	6x8





## Vending Hot Cups

Our paper vending cups are a convenient, flexible and reliable package designed for serving hot drinks from vending machines. They are available in an array of designs to meet your needs.

The "Wildcard" design can incorporate some fun into your break time, and is ideal for use in break rooms, casinos and hospitals.

## VENDING STOCK DESIGNS BY SIZE



	Champagne	SoHo®	Wildcard™
8oz	x	x	x
10oz	x		
12oz		x	
12oz (squat)	x		x

## VENDING HOT CUPS



	8oz	10oz	12oz	12oz (squat)
Stock #	SVR-8	SVR-10	SVR-12	SVS-12
Case/Sleeve Qty	2000/100	2000/80	1500/75	1500/75
Case Weight (lbs)	30.2	35.5	31.7	31.0
Case Cube (cu ft)	2.90	3.57	3.29	3.12
Case Dimensions	15.25x12.13x27.13	19.38x12.81x24.88	16.00x12.88x27.56	16.69x13.44x24.00
Ti/Hi	9x3	8x4	9x3	9x4
Lid	LHSL-8	LHSL-9	LHSL-9	LHSL-12

## VENDING LIDS POLYSTYRENE



	Lock-Back/White	Lock-Back/White	Lock-Back/White
Stock #	LHSL-8	LHSL-9	LHSL-12
Case/Sleeve Qty	2000/100	2000/100	1500/100
Case Weight (lbs)	8.3	10.7	7.3
Case Cube (cu ft)	1.81	2.06	1.70
Case Dimensions	15.88x12.50x15.75	16.75x13.50x15.75	17.38x10.75x15.75
Ti/Hi	9x5	9x5	12x5



# Hot Cups



## Hot Cup Accessories

Our kraft Cup Buddy® sleeves, made with 100% recycled fiber and a minimum of 60% post-consumer recycled fiber, are the perfect complement for your hot cups. Cup Buddy sleeves can be recycled and composted in most commercial facilities\*.

## CUP BUDDY®



	RSK-20	RSW-20
<b>Stock #</b>	RSK-20	RSW-20
<b>Case/Sleeve Qty</b>	1200/100	1200/100
<b>Case Weight (lbs)</b>	29.5	29.5
<b>Case Cube (cu ft)</b>	1.37	1.37
<b>Case Dimensions</b>	24.13x10.63x9.25	24.13x10.63x9.25
<b>Ti/Hi</b>	8x5	8x5

## CUP BUDDY® STOCK DESIGNS BY SIZE



	Carte Blanc®	SoHo®	Kraft	ecotainer®
<b>RSK-20</b>		<b>x</b>	<b>x</b>	<b>x</b>
<b>RSW-20</b>	<b>x</b>			

## Hot Cup Accessories – Cup Carriers

Cup Carriers are perfect for easily holding multiple hot beverages at one time. The 2-cell and 4-cell carrier options maximize drink stability with built-in cut-outs that wrap around the side of the cup to hold it in place. The sturdy construction and top handle allows you to hold several hot drinks at one time without actually holding the cups, making on-the-go drink transportation manageable for consumers.

## CUP CARRIERS



	2 Cell-cup	4 Cell-cup
<b>Stock #</b>	FCD-191025	FCD-181822
<b>Case/Sleeve Qty</b>	250	200
<b>Case Weight (lbs)</b>	30.6	34.8
<b>Case Cube (cu ft)</b>	2.42	2.33
<b>Case Dimensions</b>	27.88x11.13x13.50	18.38x14.88x14.75
<b>Ti/Hi</b>	8x6	6x4



\*Check with your local municipality for acceptance.



# Cold Cups

In today's fast-paced world, quality single-use disposables are a must. At International Paper, our cold cups are offered in a traditional double-poly coated material as well as an Ingeo™ (PLA) plant-based material that is compostable, providing you options to meet your specific needs. Our lid offering not only provides you with a secure lid fit, but also offers you a choice of material types. Whether you need a lid that is recyclable or compostable, we have a lid solution that fits. To aid in minimizing your inventory, we have a common lid that fits across multiple sizes. International Paper's cold cups come in an array of stock designs and can be custom printed with your logo. All our paper cold cups meet the Sustainable Forestry Initiative® Chain-of-Custody standards, guaranteeing responsible forestry practices are followed.





## Standard Cold Cups

Our traditional double-sided poly (polyethylene) coated cold cups deliver quality performance to the foodservice industry. Available in a broad range of sizes with a variety of lid styles and materials, we have the perfect combination to meet your needs. Our cold cups are also available for use in vending machines.

## STOCK DESIGNS BY SIZE



	Champagne	Coke	Showtime™
5oz	X		
7oz	X		
9oz	X		
10oz	X		
12oz	X		
12oz (squat)	X	X	X
16oz	X	X	X
18oz		X	
20oz (tall)	X	X	
22oz	X	X	X
24oz (tall)	X	X	
32oz	X	X	X
44oz (tall)		X	X



## STANDARD COLD CUPS



	5oz	7oz	9oz	10oz	12oz
Stock #	DMR-5	DMR-7	DMR-9	DMM-10	DMM-12
Case/Sleeve Qty	2500/100	2500/100	2500/100	2000/80	2500/100
Case Weight (lbs)	23.5	31.1	34.8	36.8	43.9
Case Cube (cu ft)	2.37	2.90	3.39	3.57	3.79
Case Dimensions	13.31x13.31x23.13	14.44x14.44x24.06	15.63x15.63x24.00	19.38x12.81x24.88	16.38x16.38x24.38
Ti/Hi	9x4	9x4	9x4	8x4	6x4
Lid	No Lid Available	LCRS-7	LCRS-9	LCMS-10	LCMS-12

# Cold Cups



## STANDARD COLD CUPS



	12oz (squat)	16oz	18 oz	20oz (tall)
<b>Stock #</b>	DMS-12	DMR-16	DMR-18	DMT-20
<b>Case/Sleeve Qty</b>	2000/100	1000/50	1000/50	1000/50
<b>Case Weight (lbs)</b>	36.7	26.4	28.4	32.5
<b>Case Cube (cu ft)</b>	3.89	2.72	3.32	3.66
<b>Case Dimensions</b>	18.13x14.56x25.44	18.00x14.50x18.00	18.13x14.56x21.75	18.00x14.50x24.25
<b>Ti/Hi</b>	6x4	9x5	6x5	9x4
<b>Lid</b>	LCRS-22, LCRO-22, LCRDO-22, LCRSA-22, LCRSE-22			

common lid for these sizes



## STANDARD COLD CUPS



	22oz	24oz (tall)	32oz	44oz (tall)
<b>Stock #</b>	DMR-22	DMT-24	DMR-32	DMT-44
<b>Case/Sleeve Qty</b>	1000/50	1000/40	500/25	500/25
<b>Case Weight (lbs)</b>	30.5	31.2	27.5	33.7
<b>Case Cube (cu ft)</b>	3.77	4.92	3.84	5.05
<b>Case Dimensions</b>	18.00x14.50x24.94	18.63x18.63x24.50	21.88x17.13x17.69	23.06x18.56x20.38
<b>Ti/Hi</b>	9x4	6x4	6x5	6x5
<b>Lid</b>	LCRS-22, LCRO-22, LCRDO-22, LCRSA-22, LCRSE-22		LCRS-32, LCRO-32, LCRDO-32, LCRSA-32, LCRSE-32	LCTS-44, LCTSL-44, LCTSA-44

common lid for these sizes



# Cold Cups

## STANDARD LIDS POLYSTYRENE



	Flat/Translucent	Flat/Translucent	Flat/Translucent	Flat/Translucent	Flat/Translucent	Flat/Translucent
<b>Stock #</b>	LCRS-7	LCRS-9	LCMS-10	LCMS-12	LCRS-22	LCRS-32
<b>Case/Sleeve Qty</b>	2500/100	2500/100	2500/100	2500/100	1000/100	1000/100
<b>Case Weight (lbs)</b>	8.0	9.6	10.8	11.3	7.0	8.6
<b>Case Cube (cu ft)</b>	2.22	2.44	2.91	3.63	1.35	2.24
<b>Case Dimensions</b>	15.38x15.38x16.25	16.38x16.38x15.75	16.50x16.50x18.50	17.38x17.38x20.75	18.25x17.75x7.19	21.63x19.56x9.13
<b>Ti/Hi</b>	9x6	9x6	9x5	6x5	6x12	4x10

## STANDARD LIDS POLYSTYRENE



	Flat/Translucent	Flat/Translucent
<b>Stock #</b>	LCTS-44	LCTSL-44
<b>Case/Sleeve Qty</b>	1000/100	1500/100
<b>Case Weight (lbs)</b>	9.7	14.6
<b>Case Cube (cu ft)</b>	2.49	4.24
<b>Case Dimensions</b>	23.38x18.50x9.94	23.38x14.25x22.00
<b>Ti/Hi</b>	4x10	6x4

## STANDARD LIDS PETE



	Flat/Clear	Flat/Clear	Flat/Clear
<b>Stock #</b>	LCRSA-22	LCRSA-32	LCTSA-44
<b>Case/Sleeve Qty</b>	1000/100	1000/100	1000/100
<b>Case Weight (lbs)</b>	7.0	8.6	10.0
<b>Case Cube (cu ft)</b>	1.35	2.24	2.49
<b>Case Dimensions</b>	18.25x17.75x7.19	21.63x19.56x9.13	23.38x18.50x9.94
<b>Ti/Hi</b>	6x12	4x10	8x4

## STANDARD LIDS PETE



	Large Dome/ Clear	Small Dome/ Clear	Large Dome/ Clear	Small Dome/ Clear
<b>Stock #</b>	LCRO-22	LCRDO-22	LCRO-32	LCRDO-32
<b>Case/Sleeve Qty</b>	1000/100	1000/100	1000/100	1000/100
<b>Case Weight (lbs)</b>	6.5	7.5	6.5	15.5
<b>Case Cube (cu ft)</b>	2.37	2.37	2.37	2.40
<b>Case Dimensions</b>	19.63x18.69x8.19	19.63x18.69x8.19	21.81x20.00x9.38	21.81x20.13x9.44
<b>Ti/Hi</b>	6x12	6x10	6x10	4x10

# Cold Cups



**ecotainer®**

**Making a difference – one cup at a time®**

An environmentally sensitive product line, ecotainer® uses a plant-based, Ingeo™ (PLA) coating that is fully compostable in commercial composting facilities. By using compostable cold cups and lids, we are decreasing our dependencies on petrochemicals and reducing the amount of waste being sent to landfills.

- ☞ Made with fully renewable materials
- ☞ Meets ASTM standard for compostability
- ☞ Certified by the Biodegradable Products Institute (BPI)
- ☞ Compostable in most commercial composting facilities\*

**ecotainer®  
STOCK  
DESIGNS  
BY SIZE**



	ecotainer®	Coke
12oz	X	X
16oz	X	X
22oz	X	X
32oz	X	X

**ecotainer®  
LIDS  
PLA**



	Flat/Clear	Flat/Clear
<b>Stock #</b>	LCRSE-22	LCRSE-32
<b>Case/Sleeve Qty</b>	2000/100	1000/100
<b>Case Weight (lbs)</b>	9.7	8.6
<b>Case Cube (cu ft)</b>	3.12	2.24
<b>Case Dimensions</b>	18.88x15.13x18.88	21.63x19.56x9.13
<b>Ti/Hi</b>	6x5	4x10



**ecotainer®  
COLD CUPS**



	12oz	16oz	22oz	32oz
<b>Stock #</b>	DMSE-12	DMRE-16	DMRE-22	DMRE-32
<b>Case/Sleeve Qty</b>	1000/50	1000/50	1000/50	500/25
<b>Case Weight (lbs)</b>	21.5	26.9	31.1	28.1
<b>Case Cube (cu ft)</b>	2.27	2.76	3.80	3.72
<b>Case Dimensions</b>	18.13x14.56x14.88	18.13x14.56x18.06	18.13x14.63x24.75	21.18x17.06x17.81
<b>Ti/Hi</b>	6x6	6x6	9x3	6x5
<b>Lid</b>	LCRSE-22, LCRS-22, LCRO-22, LCRDO-22, LCRSA-22			LCRSE-32, LCRS-32, LCRO-32, LCRDO-32, LCRSA-32

common lid for these sizes



\*Commercial composting facilities may not exist in your area. Please check with your local municipality or go to [www.findacomposter.com](http://www.findacomposter.com).





## Clear Plastic Cups

Our heavy duty, clear plastic cups and lids are perfect for featuring all kinds of beverages while showcasing your brand. These cups can be custom-printed, and two lid styles are available to complement your beverage of choice. Our PETE plastic cups and lids are recyclable\* and a great option.

## CLEAR PLASTIC COLD CUPS

PETE



	10oz	12oz	20oz	16oz	24oz	32oz
<b>Stock #</b>	PMRK-10	PMRK-12	PMRK-20	PMRK-16	PMRK-24	PMRK-32
<b>Case/Sleeve Qty</b>	1000/50	1000/50	1000/50	1000/50	600/50	300/25
<b>Case Weight (lbs)</b>	23.0	33.4	44.1	41.3	27.0	20.0
<b>Case Cube (cu ft)</b>	2.12	2.86	3.93	3.99	2.66	2.52
<b>Case Dimensions</b>	16.00x13.00x17.63	18.88x15.38x17.00	19.13x15.25x23.25	20.38x16.38x20.63	16.13x12.38x23.00	17.50x13.25x18.75
<b>Ti/Hi</b>	9x4	6x5	6x4	6x4	9x4	9x5
<b>Lid</b>	LPRSA-10	LPRSA-20, LPRDO-20		LPRSA-24, LPRDO-24		LPRSA-32, LPRDO-32

common lid for these sizes

common lid for these sizes

## CLEAR PLASTIC LIDS

PETE



	Flat/Clear	Flat/Clear	Flat/Clear	Flat/Clear
<b>Stock #</b>	LPRSA-10	LPRSA-20	LPRSA-24	LPRSA-32
<b>Case/Sleeve Qty</b>	1000/100	1000/100	1000/100	500/100
<b>Case Weight (lbs)</b>	6.0	9.8	10.0	7.0
<b>Case Cube (cu ft)</b>	1.27	1.99	2.20	1.27
<b>Case Dimensions</b>	16.88x7.00x18.50	21.50x19.13x8.38	21.50x20.25x8.75	22.88x9.38x10.25
<b>Ti/Hi</b>	14x4	6x12	4x11	5x4

## CLEAR PLASTIC LIDS

PETE



	Dome/Clear	Dome/Clear	Dome/Clear
<b>Stock #</b>	LPRDO-20	LPRDO-24	LPRDO-32
<b>Case/Sleeve Qty</b>	1000/100	1000/100	500/50
<b>Case Weight (lbs)</b>	12.8	13.0	6.1
<b>Case Cube (cu ft)</b>	1.85	1.88	2.00
<b>Case Dimensions</b>	19.44x19.31x8.50	20.63x17.50x9.00	22.63x9.25x16.50
<b>Ti/Hi</b>	6x10	6x10	8x5



\*Check with your local municipality for acceptance.



## Car Cups

Are you up-sizing your beverage program?  
Are you looking for paper or plastic? We have options for you. Our plastic and paper car cups are perfect for your on-the-go applications, fitting perfectly in car drink holders while providing environmental options.

## CAR CUPS COLD CUPS



	30oz*	32oz	42oz*	44oz
<b>Stock #</b>	DMR-30	PTM-32	DMR-42	PTM-44
<b>Case/Sleeve Qty</b>	500/50	500/25	600/40	400/20
<b>Case Weight (lbs)</b>	27.5	33.8	39.4	40.1
<b>Case Cube (cu ft)</b>	3.84	3.89	4.03	4.63
<b>Case Dimensions</b>	21.88x17.13x17.69	21.25x16.63x19.00	23.25x13.94x21.50	23.38x18.75x18.25
<b>Ti/Hi</b>	6x5	6x4	6x5	4x4
<b>Lid</b>	LCRS-32, LCRO-32, LCRSL-32, LCRDO-32, LCRSA-32, LCRSE-32		LCTS-44, LCTSL-44, LCTSA-44	LCTSL-44
<b>Material</b>	Paper	♻️ Polypropylene	Paper	♻️ Polypropylene

common lid for these sizes

## PLASTIC CAR CUP LIDS POLYSTYRENE



	Flat/Translucent	Lock N' Go®
<b>Stock #</b>	LCRS-32	LCTSL-44
<b>Case/Sleeve Qty</b>	1000/100	1500/100
<b>Case Weight (lbs)</b>	8.6	14.6
<b>Case Cube (cu ft)</b>	2.24	4.24
<b>Case Dimensions</b>	21.63x19.56x9.13	23.38x14.25x22.00
<b>Ti/Hi</b>	4x10	6x4

## PLASTIC CAR CUP LIDS PETE



	Small Dome/ Clear
<b>Stock #</b>	LCRDO-32
<b>Case/Sleeve Qty</b>	1000/100
<b>Case Weight (lbs)</b>	15.5
<b>Case Cube (cu ft)</b>	2.4
<b>Case Dimensions</b>	21.81x20.13x9.44
<b>Ti/Hi</b>	4x10

# Cold Cups



## Vending Cold Cups

Our paper vending cups are a convenient, flexible and reliable package designed for serving cold drinks from vending machines.

## VENDING LIDS POLYSTYRENE



	Lock-Back/ White
<b>Stock #</b>	LHSL-9
<b>Case/Sleeve Qty</b>	2000/100
<b>Case Weight (lbs)</b>	10.7
<b>Case Cube (cu ft)</b>	2.06
<b>Case Dimensions</b>	16.75x13.50x15.75
<b>Ti/Hi</b>	9x5

## VENDING COLD CUPS



	12oz
<b>Stock #</b>	DVR-12
<b>Case/Sleeve Qty</b>	1500/75
<b>Case Weight (lbs)</b>	30.9
<b>Case Cube (cu ft)</b>	3.29
<b>Case Dimensions</b>	16.00x12.88x27.56
<b>Ti/Hi</b>	9x3
<b>Lid</b>	LHSL-9

## Cold Cup Accessories – Cup Carriers

Cup Carriers are perfect for easily holding multiple cold beverages at one time. The 2-cell and 4-cell carrier options maximize drink stability with built-in cut-outs that wrap around the side of the cup to hold it in place. The sturdy construction and top handle allows you to hold several cold drinks at one time without actually holding the cups, making on-the-go drink transportation manageable for consumers.

## CUP CARRIERS COLD CUPS



	2 Cell-cup	4 Cell-cup
<b>Stock #</b>	FCD-191025	FCD-181822
<b>Case/Sleeve Qty</b>	250	200
<b>Case Weight (lbs)</b>	30.6	21.1
<b>Case Cube (cu ft)</b>	2.42	2.33
<b>Case Dimensions</b>	27.88x11.13x13.50	18.38x14.88x14.75
<b>Ti/Hi</b>	8x6	6x4

# Food Packaging

Many people today are choosing to eat out or pick up food on-the-go, and International Paper Foodservice has a full line of products to meet this emerging trend and help enhance your take-out programs. Our food packaging offers strength and performance with high-quality graphics that complement the ambience of your operation. Our versatile product line can be used for both hot and cold applications and is available in a wide variety of sizes with an assortment of lid materials. Our ecotainer® food containers provide you with a compostable alternative to meet your needs. We also have a popcorn bucket and bag line available in vibrant designs - great for theater and concessions. Our food container and bucket products are Sustainable Forestry Initiative® Chain-of-Custody certified, guaranteeing responsible forestry practices are followed.





## Standard Food Containers


Our traditional double-sided poly food containers and lids are versatile so they can be used for hot or cold applications. The food containers are stackable for easy packing and have common lids for multiple sizes to lessen storage requirements compared to other materials. Our containers offer strength and performance while our lids provide an assortment of material and style options that can complete your foodservice needs.

## STOCK DESIGNS BY SIZE



	Carte Blanc®	Champagne	SoHo®
3oz		X	
4oz		X	X
5oz	X	X	
6oz	X	X	
8oz	X	X	X
10oz	X	X	
16oz (tall)	X		X
12oz	X	X	X
16oz (squat)	X	X	
24oz	X		
32oz	X	X	

## STANDARD FOOD CONTAINERS



	3oz	4oz	5oz	12oz
Stock #	DFR-3	DFR-4	DFR-5	DFR-12
Case/Sleeve Qty	1000/50	1000/50	1000/50	1000/50
Case Weight (lbs)	11.0	16.3	12.3	28.8
Case Cube (cu ft)	2.16	3.10	1.95	3.70
Case Dimensions	15.63x12.88x18.50	18.13x14.50x20.38	18.13x14.75x12.63	21.88x17.63x16.56
Ti/Hi	9x5	9x5	6x8	6x5
Lid	LFRD-3, LFRFA-3	LFRFHM-4, LFRFA-4	LFRD-5, LFRDM-5, LFRFA-5	LFRD-12, LFRDM-12, LFRFH-12, LFRFHB-12, LFRFHP-12



# Food Packaging



## STANDARD FOOD CONTAINERS

	6oz	8oz	10oz	16oz (tall)
<b>Stock #</b>	DFR-6	DFR-8	DFR-10	DFT-16
<b>Case/Sleeve Qty</b>	1000/50	1000/50	1000/50	500/25
<b>Case Weight (lbs)</b>	21.2	18.7	24.2	17.3
<b>Case Cube (cu ft)</b>	4.01	2.85	3.47	2.57
<b>Case Dimensions</b>	19.56x15.75x22.50	19.63x15.81x15.88	19.56x15.75x19.44	19.50x15.69x14.50
<b>Ti/Hi</b>	6x4	6x6	6x5	6x6
<b>Lid</b>	LFRD-10, LFTFH-16, LFTFHB-16, LFTFA-16, LFTFHP-16			

common lid for these sizes

## STANDARD FOOD CONTAINERS

	16oz (squat)	24oz	32oz
<b>Stock #</b>	DFS-16	DFR-24	DFR-32
<b>Case/Sleeve Qty</b>	500/25	500/25	500/25
<b>Case Weight (lbs)</b>	19.2	23.5	26.4
<b>Case Cube (cu ft)</b>	3.32	4.33	4.01
<b>Case Dimensions</b>	23.06x18.63x13.36	23.19x18.63x17.31	23.06x18.63x16.13
<b>Ti/Hi</b>	6x6	6x6	6x6
<b>Lid</b>	LFRFA-32, LFRD-32, LFRFH-32, LFRFHB-32, LFRFHP-32		

common lid for these sizes

### Combination Packs

When looking for a food container and lid combination, we have the product for you. Our combination packs include our standard double-poly food containers and flat white lids that are perfect for hot or cold applications.

## Combination Packs Champagne FOOD CONTAINERS

	8oz*	12oz	16oz (squat)	32oz*
<b>Stock #</b>	DFRC-8	DFRC-12	DFSC-16	DFRC-32
<b>Case/Sleeve Qty</b>	250/50	250/50	250/50	250/25
<b>Case Weight (lbs)</b>	7.8	11.2	14.2	16.8
<b>Case Cube (cu ft)</b>	1.40	1.85	3.32	3.14
<b>Case Dimensions</b>	12.38x12.38x15.75	13.88x13.88x17.50	24.13x10.00x23.75	23.63x14.38x16.00
<b>Ti/Hi</b>	9x5	9x5	8x4	6x5
<b>Lid</b>	LFTFH-16	LFRFH-12	LFRFH-32	

common lid for these sizes

\*Combo packs are also available in Carte Blanc® with a clear polypropylene lid.



## STANDARD LIDS POLYSTYRENE



	Hot/Flat/White	Hot/Flat/White	Hot/Flat/White	Hot/Flat/White
<b>Stock #</b>	LFRFHM-4	LFRFH-12	LFTFH-16	LFRFH-32
<b>Case/Sleeve Qty</b>	2000/100	1000/100	1000/50	500/50
<b>Case Weight (lbs)</b>	12.0	13.8	14.7	7.6
<b>Case Cube (cu ft)</b>	2.93	2.56	2.03	1.46
<b>Case Dimensions</b>	18.88x15.13x17.78	22.88x18.38x10.50	20.00x20.00x8.75	24.38x10.00x10.38
<b>Ti/Hi</b>	9x5	6x9	11x4	10x9

## STANDARD LIDS POLYSTYRENE



	Hot/Flat/Black	Hot/Flat/Black	Hot/Flat/Black
<b>Stock #</b>	LFRFHB-12	LFTFHB-16	LFRFHB-32
<b>Case/Sleeve Qty</b>	1000/50	1000/50	500/50
<b>Case Weight (lbs)</b>	13.8	14.7	7.6
<b>Case Cube (cu ft)</b>	2.56	2.03	1.46
<b>Case Dimensions</b>	22.88x18.38x10.50	20.00x20.00x8.75	24.38x10.00x10.38
<b>Ti/Hi</b>	6x9	11x4	8x10

## STANDARD LIDS POLYPROPYLENE



	Hot/Flat/Clear	Hot/Flat/Clear	Hot/Flat/Clear
<b>Stock #</b>	LFRFHP-12	LFTFHP-16	LFRFHP-32
<b>Case/Sleeve Qty</b>	1000/50	1000/50	1000/50
<b>Case Weight (lbs)</b>	12.8	10.5	14.0
<b>Case Cube (cu ft)</b>	3.23	2.7	3.59
<b>Case Dimensions</b>	22.81x18.38x13.31	20.31x16.38x14.00	24.06x19.38x13.31
<b>Ti/Hi</b>	4x7	6x7	4x7

# Food Packaging



## STANDARD LIDS PETE



	Cold/Dome/ Clear	Cold/Dome/ Clear/Smooth	Cold/Dome/ Clear	Cold/Dome/ Clear
<b>Stock #</b>	LFRD-3	LFRDM-5	LFRD-5	LFRD-10
<b>Case/Sleeve Qty</b>	1000/100	1000/100	1000/100	1000/100
<b>Case Weight (lbs)</b>	5.5	7.3	7.0	9.3
<b>Case Cube (cu ft)</b>	1.15	1.77	1.53	2.08
<b>Case Dimensions</b>	17.38x16.38x7.00	19.94x18.69x8.19	18.75x17.13x8.25	20.38x19.88x8.88
<b>Ti/Hi</b>	6x12	12x5	6x10	4x10

## STANDARD LIDS PETE



	Cold/Dome/ Clear	Cold/Dome/ Clear/Smooth	Cold/Dome/ Clear/Smooth	Cold/Dome/ Clear
<b>Stock #</b>	LFRD-12	LFRDM-12	LFTDM-16	LFRD-32
<b>Case/Sleeve Qty</b>	1000/100	1000/50	1000/100	1000/100
<b>Case Weight (lbs)</b>	13.0	12.0	10.6	11.3
<b>Case Cube (cu ft)</b>	2.60	2.63	2.01	2.76
<b>Case Dimensions</b>	22.88x19.38x10.13	22.75x20.38x9.81	20.44x19.19x8.88	24.13x10.00x19.75
<b>Ti/Hi</b>	4x10	4x9	4x9	8x5

## STANDARD LIDS PETE



	Cold/Flat/Clear	Cold/Flat/Clear	Cold/Flat/Clear	Cold/Flat/Clear	Cold/Flat/Clear
<b>Stock #</b>	LFRFA-3	LFRFA-4	LFRFA-5	LFTFA-16	LFRFA-32
<b>Case/Sleeve Qty</b>	1000/50	1000/100	1000/100	500/25	500/50
<b>Case Weight (lbs)</b>	5.8	10.0	5.2	6.1	8.0
<b>Case Cube (cu ft)</b>	1.38	1.63	1.56	1.20	1.52
<b>Case Dimensions</b>	16.63x7.20x19.86	18.75x15.00x10.00	19.00x7.75x18.25	21.88x9.00x10.50	24.13x9.88x11.00
<b>Ti/Hi</b>	17x5	10x6	12x6	8x8	4x8





# Food Packaging



**ecotainer®**

## **Making a difference – one cup at a time®**

An environmentally sensitive product line, ecotainer® uses a plant-based, Ingeo™ (PLA) coating that is fully compostable in commercial composting facilities. By using compostable hot cups and lids, we are decreasing our dependencies on petrochemicals and reducing the amount of waste being sent to landfills.

- ☞ Made with fully renewable materials
- ☞ Meets ASTM standard for compostability
- ☞ Certified by the Biodegradable Products Institute (BPI)
- ☞ Compostable in most commercial composting facilities\*

## **ecotainer® FOOD CONTAINERS**



	8oz	12oz	16oz (squat)	32oz
<b>Stock #</b>	DFRE-8	DFRE-12	DFSE-16	DFRE-32
<b>Case/Sleeve Qty</b>	1000/50	1000/50	500/25	500/25
<b>Case Weight (lbs)</b>	21.5	30.0	19.6	26.4
<b>Case Cube (cu ft)</b>	2.85	3.70	3.36	4.03
<b>Case Dimensions</b>	19.63x15.81x15.88	21.88x17.63x16.56	23.19x18.63x13.43	23.19x18.63x16.13
<b>Ti/Hi</b>	6x6	6x6	6x7	6x6
<b>Lid</b>	LFRD-10, LFTDM-16, LFTFH-16, LFTFHB-16, LFTFA-16, LFTFHP-16	LFRD-12, LFRDM-12, LFRFH-12, LFRFHB-12, LFRFHP-12	LFRFA-32, LFRD-32, LFRFH-32, LFRFHB-32, LFRFHP-32	

— common lid for these sizes —



\*Commercial composting facilities may not exist in your area. Please check with your local municipality or go to [www.findacomposter.com](http://www.findacomposter.com).

# Food Packaging

## French Fry and Snack Containers

Our double-poly snack containers are great for fries, onion rings, plantain chips, anything goes with this product! Good for your consumers on-the-go.

## FRENCH FRY AND SNACK CONTAINERS FAMILY STYLE™ FOOD CONTAINERS



	12oz	16oz	32oz
Stock #	DMR-14	DFF-16	SFR-32
Case/Sleeve Qty	1000/50	500/50	500/50
Case Weight (lbs)	22.0	15.2	18.5
Case Cube (cu ft)	2.25	3.04	3.2
Case Dimensions	18.13x15.31x14.00	19.88x16.00x16.50	23.88x19.13x12.13
Ti/Hi	6x7	6x6	4x8



# Food Packaging



## Food Buckets

Whether you are serving meals for families or offering side options, we have a range of sizes to complement your take-out program. Our food buckets are designed with strength and sturdiness in mind and we offer a variety of lids to complete the packaging solution. With an excellent printing surface for consumer identification and enhanced merchandising, our food buckets are the perfect fit for your take-out programs.

## FOOD BUCKET STOCK DESIGNS BY SIZE



	Carte Blanc®	Champagne
25oz	x	
54oz	x	
85oz		x
130oz*		x
170oz		x

## FOOD BUCKETS\*\*



	25oz	54oz	85oz	130oz	170oz
Stock #	DFS-25	DFS-54	DFM-85	DMM-130	DFM-170
Case/Sleeve Qty	450/50	450/75	200	200	100
Case Weight (lbs)	16.4	30.2	20.3	29.8	21.5
Case Cube (cu ft)	2.72	5.10	2.75	5.07	4.69
Case Dimensions	17.13x17.13x16.00	23.13x15.38x24.75	15.13x15.13x20.75	17.81x17.81x27.63	20.31x20.31x19.63
Ti/Hi	6x6	6x4	9x5	6x3	6x4
Lid	LFMDP-25	LFMDP-85, LFRHM-85, LFRFHK-85		LFRHM-130	LFRHM-170

— common lid for these sizes —





## FOOD BUCKET LIDS PAPER



	Flat/White	Flat/White	Flat/White
<b>Stock #</b>	LFRHM-85	LFRHM-130	LFRHM-170
<b>Case/Sleeve Qty</b>	200	200	200
<b>Case Weight (lbs)</b>	8.4	11.9	13.4
<b>Case Cube (cu ft)</b>	0.31	0.50	0.52
<b>Case Dimensions</b>	7.50x7.50x9.63	8.88x8.88x11.00	8.88x8.88x10.88
<b>Ti/Hi</b>	5x5	5x5	5x5

## FOOD BUCKET LIDS POLYPROPYLENE



	Dome/Clear	Dome/Clear
<b>Stock #</b>	LFMDP-25	LFMDP-85
<b>Case/Sleeve Qty</b>	450/50	450/75
<b>Case Weight (lbs)</b>	13.3	13.2
<b>Case Cube (cu ft)</b>	3.26	5.43
<b>Case Dimensions</b>	18.75x18.75x16.00	23.94x16.32x24.00
<b>Ti/Hi</b>	4x6	5x4





# Food Packaging



## Popcorn Buckets and Bags

Our popcorn buckets and bags are a perfect choice for concession stands at theaters, sports arenas and airports. Our products have a clay coated finish for a brilliant exterior and improved grease resistance for buckets and inner lining in bags. With these vibrant designs, you are sure to upgrade any concession stand.

## POPCORN CONTAINERS BY SIZE



	Popcorn™	Showtime™
24oz	X	
32oz	X	X
46oz	X	X
64oz	X	X
85oz	X	X
130oz	X	X
170oz	X	X

## POPCORN BAGS BY SIZE



	Popcorn™	Showtime™
46oz	X	X
85oz	X	X
130oz	X	X
170oz	X	X

## POPCORN CONTAINERS AND BAGS



	24oz	32oz	46oz	64oz	85oz	130oz
Stock #	DMT-24	SFR-32	SFR-46	SFR-64	SFR-85	SFR-130
Case/Sleeve Qty	1000/40	500/50	1000/50	360/30	300	300
Case Weight (lbs)	31.2	18.5	36.2	25.0	21.7	26.0
Case Cube (cu ft)	4.92	3.21	5.39	4.70	3.93	5.17
Case Dimensions	18.63x18.63x24.50	23.88x19.13x12.13	24.88x19.81x18.88	21.31x16.06x23.75	22.63x15.38x19.50	22.88x15.50x25.19
Ti/Hi	6x4	4x8	4x5	6x4	6x5	6x4

## POPCORN CONTAINERS AND BAGS



	170oz	46oz bag	85oz bag	130oz bag	170oz bag
Stock #	SFM-170	BFR-46	BFR-85	BFR-130	BFR-170
Case/Sleeve Qty	100	1000	1000	500	250
Case Weight (lbs)	26.2	28.6	36.0	28.2	16.6
Case Cube (cu ft)	4.52	1.15	1.65	1.41	0.80
Case Dimensions	18.19x18.19x23.63	23.38x8.75x9.75	18.38x12.38x12.50	21.88x13.13x8.50	13.13x12.38x8.50
Ti/Hi	6x4	8x5	7x4	6x6	9x6

# Food Packaging



## Plates

Our plates are designed for strength and stability for serving a variety of foods. Strong rims and a deep dish design help prevent spills and make the plates easy to handle. Our plates are made with renewable resources and can be composted.\*

## MEDIUM WEIGHT PLATES BY SIZE



	Carte Blanc®	Champagne
7in		x
9in	x	x

## HEAVY WEIGHT PLATES BY SIZE



	Carte Blanc®	Champagne	SoHo®
6in	x	x	
7in			x
9in	x	x	x
10in		x	

## MEDIUM WEIGHT PLATES



	7in	9in
Stock #	PML-7	PML-9
Case/Sleeve Qty	1000/125	1000/125
Case Weight (lbs)	14.5	31.5
Case Cube (cu ft)	0.89	1.83
Case Dimensions	15.00x7.63x13.50	18.75x9.63x17.50
Ti/Hi	10x4	10x3



## HEAVY WEIGHT PLATES



	6in	7in	9in	10in
Stock #	PHL-6	PHL-7	PHL-9	PHL-10
Case/Sleeve Qty	1000/125	1000/125	500/125	500/125
Case Weight (lbs)	14.5	19.8	23.4	25.1
Case Cube (cu ft)	0.89	1.12	1.34	1.70
Case Dimensions	12.88x6.63x16.88	15.13x7.75x16.50	18.75x9.50x13.00	20.88x10.63x13.25
Ti/Hi	21x3	18x3	10x5	8x4

\*Our plates were deemed compatible with commercial composting systems, based on independent assessments.

# Product Nomenclature

## Cups / Containers

1	2	3	4	5	6	7	8
Material	Application	Shape	Features	Features	Approx. Capacity (oz.)		
D - Double poly S - Single poly P - Plastic	M - Manual V - Vending F - Food T - Travel P - Portion D - Double-wrap W - Wrap	R - Regular T - Tall S - Squat M - Modified	C - Combo pck. K - Clear (plastic) E - ecotainer® P - Post-consumer recycled fiber	P - Polypropylene			

## Lids






1	2	3	4	5	6	7	8	9
Material	Application	Shape	Type	Descriptor	Approx. Capacity (oz.)			
L - Lid	C - Cold H - Hot F - Food P - Plastic	R - Regular T - Tall S - Squat M - Modified P - Portion D - Double-wrap	S - Slotted V - Vending D - Dome F - Flat H - Finger hole M - Manual L - Lock-back O - Dome/Lrg. opening N - Splash Resistant	S - Styrene K - Crystal O - Dome/Sm. opening H - Hot vented W - White B - Black L - Lock-on M - Modified C - Colored A - PETE P - Polypropylene E - ecotainer®				

## Plates

1	2	3	4	5	6	7	8
Product	Material Caliper	Coating	Type	Size (in)			
P - Plate	H - Heavy M - Medium	L - Laquered					

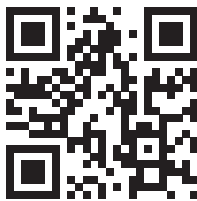
## Folding Carton

1	2	3	4	5	6	7	8	9
Product	Type	Descriptor	Length	Width	Height	First 6 digits of dimensions (cm)		
F - Folding carton R - Formed carton	C - Carriers S - Sleeve	D - Drink K - Kraft W - White						

<b>KEY</b>		Polyethylene terephthalate (PETE)
		Polypropylene (PP)
		Polystyrene (PS)
		High Impact Polystyrene (HIPS)
		Polylactic acid (PLA)

<b>KEY</b>	Example Stock No. —	<b>DFR-4</b>
	Character Position No. —	1 2 3 4 5
	Significance —	Material Application Shape Special Features Capacity (oz.)
		D-double poly F-food R-regular (none)

All case weights (pounds) and case volumes (cubic feet) are approximated and may vary.



To learn more, visit **ipfoodservice.com**  
or scan with your smartphone.

## **International Paper Foodservice Business**

6400 Poplar Avenue  
Memphis, TN 38197  
800.537.4141

©2012 International Paper Company. All rights reserved.  
Carte Blanc, Cup Buddy, ecotainer, Lock N Go, Hold&Go, SoHo, "The hot cup with a cool feel", "Making a difference one cup at a time"  
are registered trademarks and Family Style, Popcorn, Renew World, Showtime, Thermashield, Tuscany, Wildcard are trademarks  
of International Paper Company. Sustainable Forestry Initiative and SFI are marks owned by Sustainable Forestry Initiative, Inc.  
Cover printed on Carolina C1S Cover 12pt. Inside printed on Accent Opaque Text Smooth 70lb. 04/2012

